

NATHANAEL

2015-2018

A NEW CHAPTER

NATHANAEL

2015-2018

A NEW CHAPTER

MORE INFO

Online: www.archsaintboniface.ca

COME & SEE (Open Doors) details on inside page

CONTACT:

Lillian Culumović

Director of Nathanael

Coordinator of Anglophone Sector

622 Taché Avenue, Winnipeg, MB R2H 2B4

204-594-0276

lculumovic@archsaintboniface.ca

The next day Jesus decided to go to Galilee. And He found Philip and said to him, "Follow Me." Philip found Nathanael, and said to him, "We have found Him of whom Moses in the law and also the prophets wrote, Jesus of Nazareth, the son of Joseph." Nathanael said to him, "Can anything good come out of Nazareth?" Philip said to him, "Come and see."

John 1:43, 45-46

COME AND FOLLOW ME!

DOES THIS SOUND LIKE YOU?

Looking for something new
in your relationship with Jesus

Challenged to be all you can be

Seeking to become
an intentional disciple of Jesus

Willing to become
the change the Church needs

Thirsting to know God

Seeking a DEEPER walk

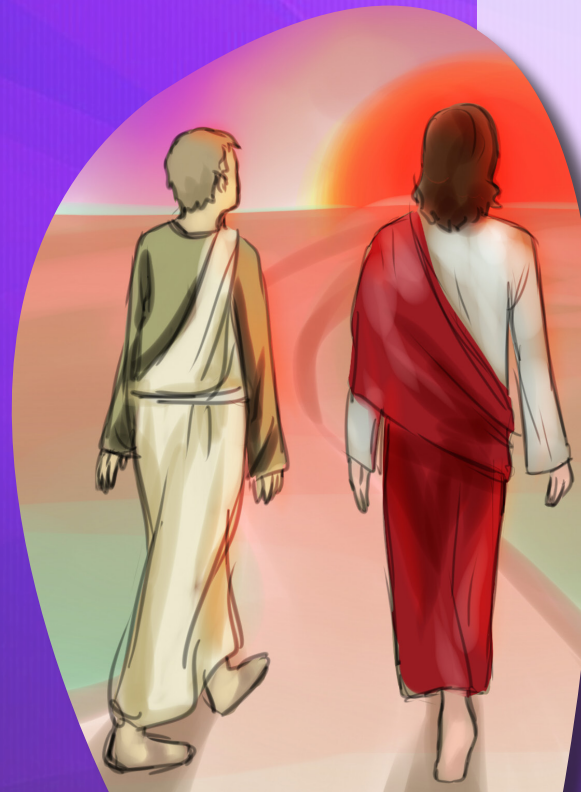
Questions but no answers

Life-directing Influence

LEADership

A Heart for Unity

NATHANAEL IS FOR YOU



ARCHDIOCESE OF
SAINT BONIFACE
WWW.ARCHSAINTBONIFACE.CA

NATHANAEL, IS...

a renewed Lay Faith Formation Program calling us to live our baptismal vocation to become a missionary disciple in our own back yard

a 3-year formation program that begins in September 2015 leading to a journey of authentic deeper discovery of faith

YEAR

- 1 PERSONAL CONVERSION
- 2 CALLED TO BE CHURCH
- 3 SENT INTO THE WORLD

PROGRESSIVELY BUILT ON

1 PERSONAL GROWTH

2 PRAYER

3 SCRIPTURE

4 CHURCH TRADITION

5 MISSIONARY DISCIPLES

Every Christian is a missionary to the extent that he or she has encountered the love of God in Christ Jesus: we no longer say that we are "disciples" and "missionaries", but rather that we are always "missionary disciples".

Pope Francis, The Joy of the Gospel, #120

NATHANAEL

2015-2018
A NEW CHAPTER

LENGTH OF PROCESS

Three years, 10 weekends per year (September to June).

See sheet in kit for dates.

LOCATION

Pastoral Centre, 622B Taché Avenue, Winnipeg, MB

ANNUAL FEES

\$3,000 total per candidate

\$2,000 paid by Archdiocese per candidate

\$500** for Parish per candidate

\$500** for candidate; includes books & retreat (payment options available)

**Bursaries available

HOW TO APPLY

- Fill out interview application form
- Obtain signature of Pastor or Parish Life Coordinator
- All applicants considered potential candidates will be invited for an interview

To find form and all details:

- go to www.archsaintboniface.ca
- or pick up one in your parish
- or come to one of 4 COME & SEE (Open Doors) events

DEADLINE : MAY 8TH, 2015

COME AND SEE (OPEN DOORS)

Ask questions, receive information, meet the team!

BILINGUAL

Sunday April 12, 2015 from 1:30 to 4 PM

Notre-Dame-de-la-Nativité Parish, 402, rue Lachance, Somerset, MB R0G 2L0

ENGLISH

Saturday April 18, 2015 from 1:30 to 4 PM

St. Emile Parish, 556 St. Anne's Road, Winnipeg, MB R2M 3G4

EN FRANÇAIS

Samedi 11 avril 2015 de 13 h 30 à 16 h

Église Saint-Eugène, 1009 chemin Saint Mary's, Winnipeg – Salle Alma-Lafrenière

Dimanche 19 avril 2015 de 13 h 30 à 16 h

Église Saint-Pierre, 448 rue Joubert, Saint-Pierre-Jolys – Entrée Église Saint-Pierre